



## Non - Automatic Bilge Pumps 01 Series

### Features & Benefits

- Pump and switch are stand alone products
- Compact, efficient, long life motors
- New mercury free float switches
- Size: 350, 500, 750, 1100, 1500, 2000, 3000, 3500 gph in 12 and 24 volt versions
- Easy clean snap-lock strainer bases
- Anti-Airlock protection
- Exclusive moisture tight seals
- Completely submersible
- Marine grade blocked wiring
- Silent and vibrationless operation

### Typical Applications

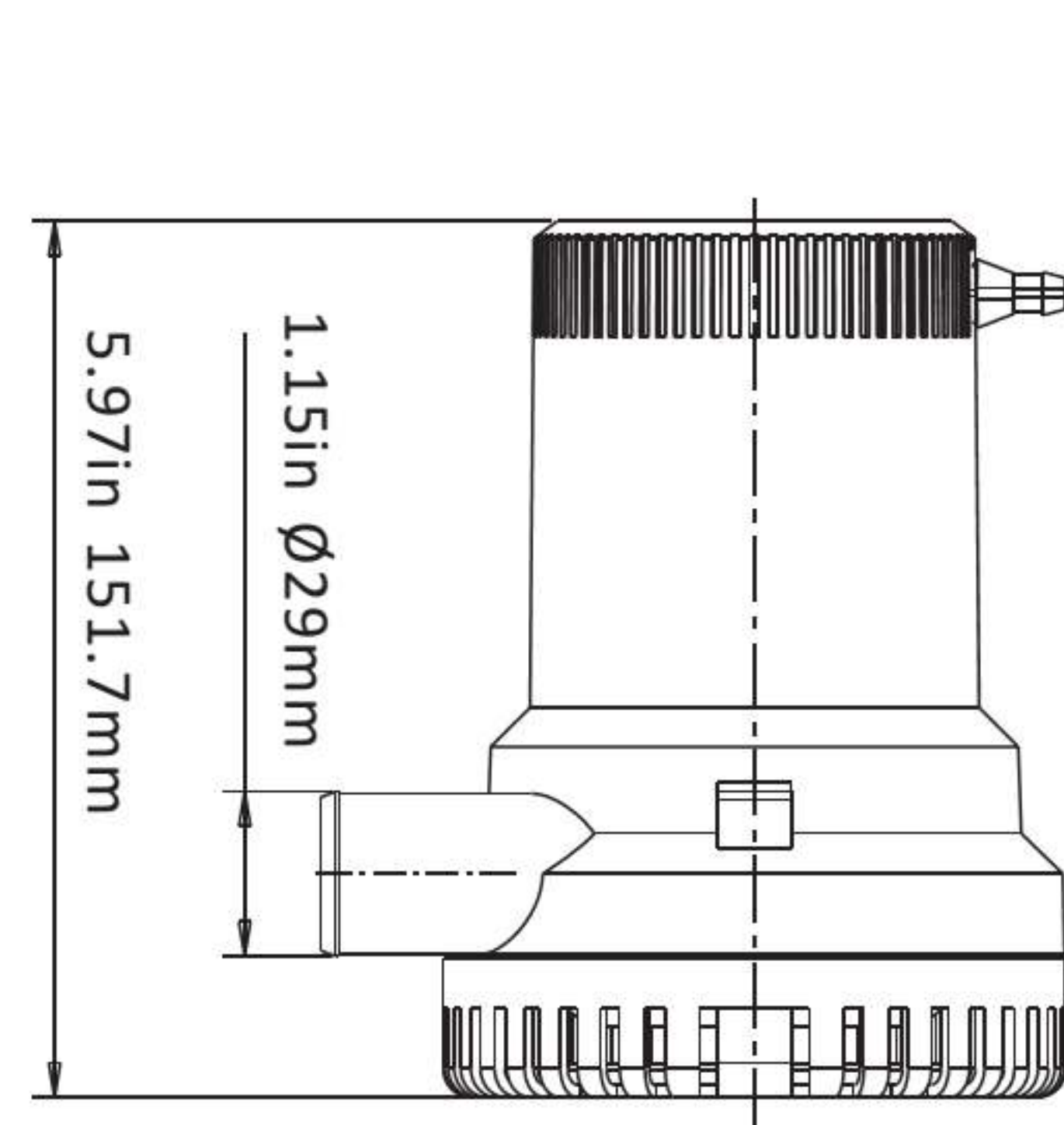
- Marine
- RV & Campers
- Industrial

### PUMP

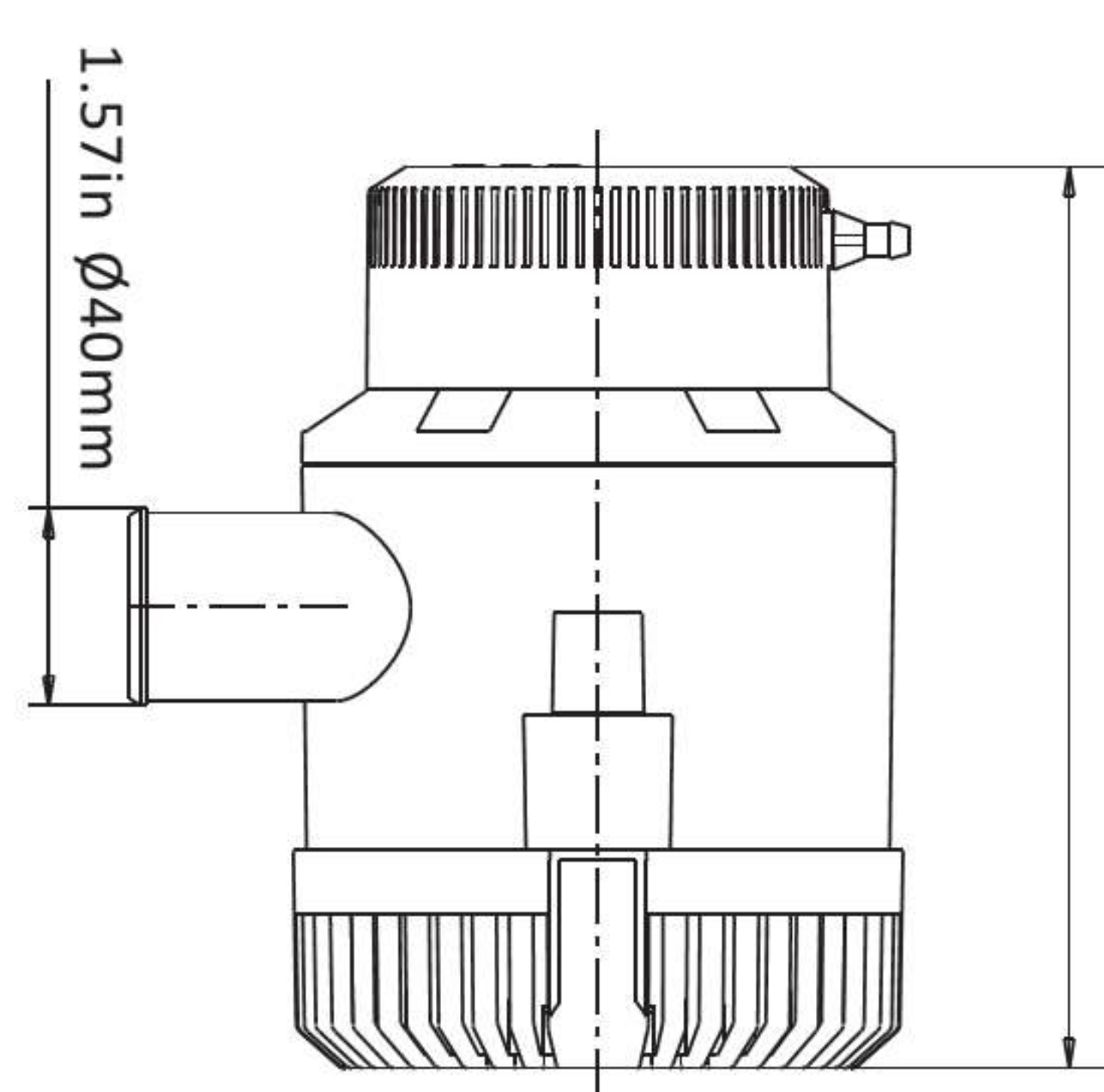
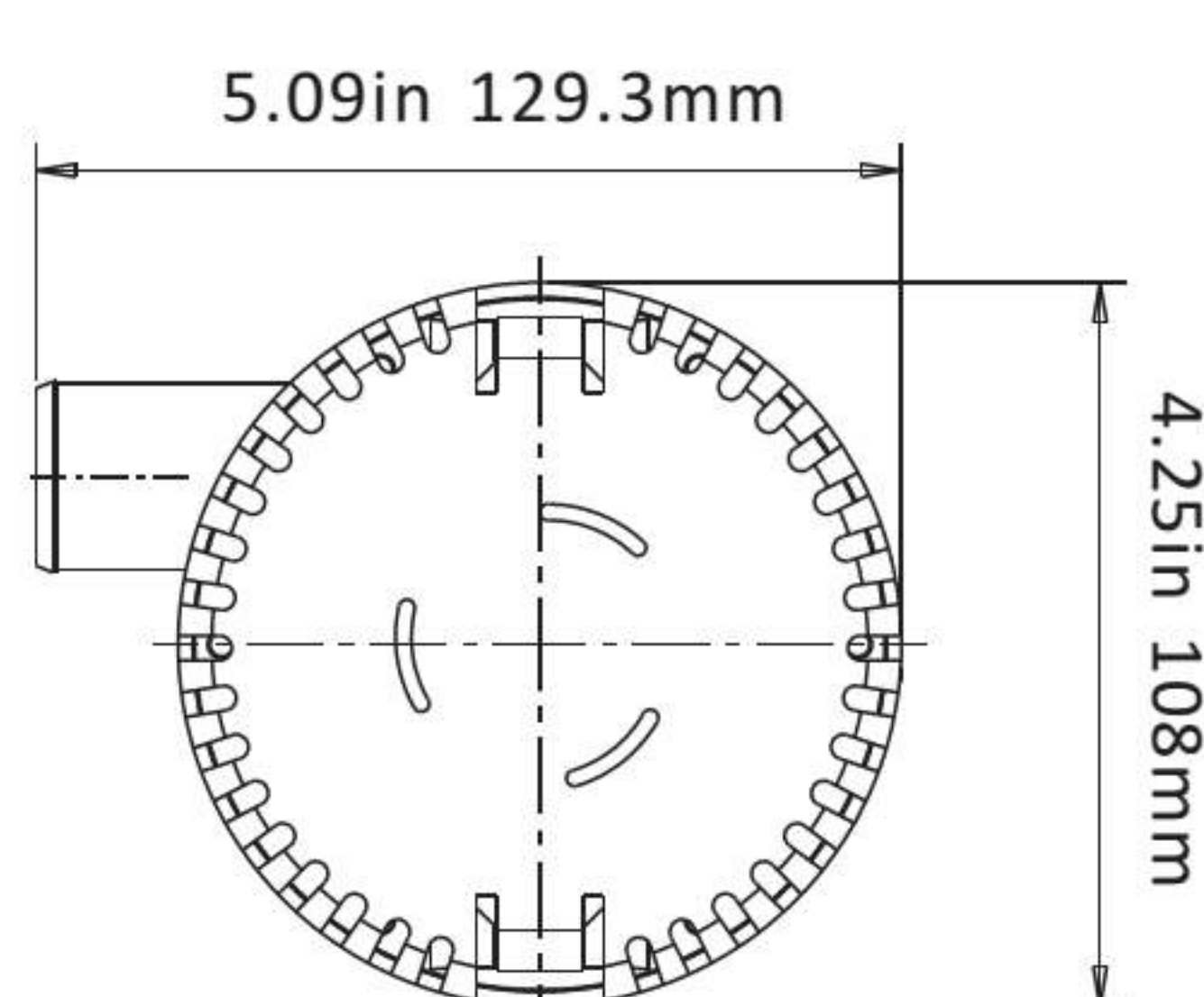
- Liquid Temperature**  
110°F (43°C) Max.
- Priming Capabilities**  
Not needed flooded suction
- Power**  
13.0 amps max current draw
- Max Pressure**  
Not needed

### MOTOR

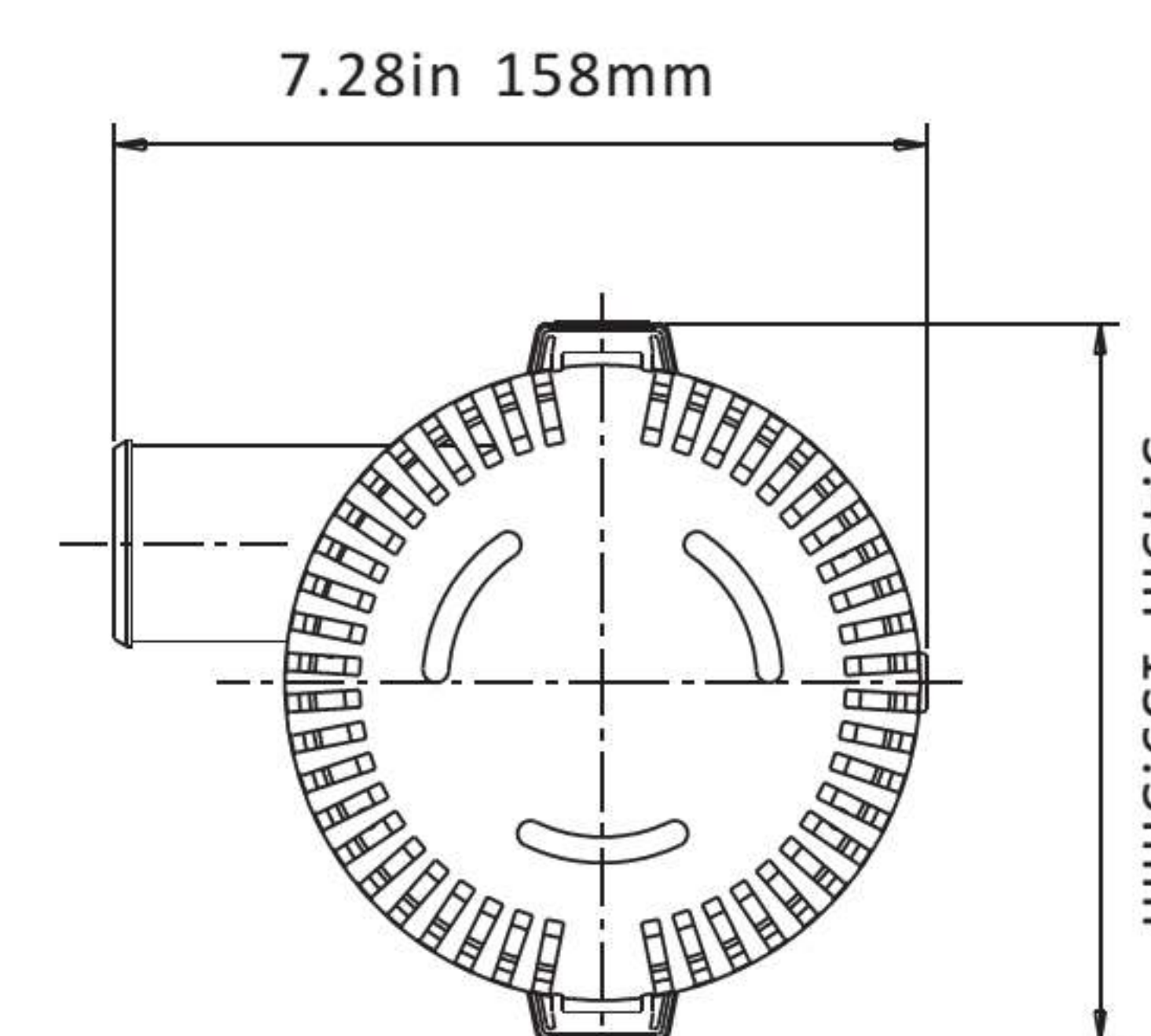
- Type**  
Compact, efficient, long life motor
- Leads**  
18 AWG, 1 m long Leads
- Temperature Limits**  
110°F (43°C) Max.
- Duty Cycle**  
Intermittent
- Voltage**  
12v/24v



1500 GPH-2000 GPH



3000 GPH-3500 GPH



### STANDARD PUMP CONFIGURATIONS

Model	Flow rate	Volts	Current	Head	Wire lead	Outlet Dia	N.W/G.W
SFBP1-G2000-01	2000 GPH	12V	9.0A	6 m	1m	29 mm/1-1/8"	1.13/1.21 kg
SFBP1-G3500-01	3500 GPH	12V	13.0A	8 m	1m	40 mm/1-1/2"	2.10/2.37 kg